

# RGP - 3487

---

## Rotary Gear Pump



EPCC / PRODUCTS / APPLICATION / SOFTWARE / ACCESSORIES / CONSUMABLES / SERVICES

**Analytical Technologies Limited**

An ISO 9001 Certified Company

[www.analyticalgroup.net](http://www.analyticalgroup.net)

## ►► TECHNICAL SPECIFICATION

Analytical Technologies Limited Offers brand gear pump model which is self priming bi-directional, positive displacement rotary pump in all stainless steel (SS-316) investment casting construction with nitride gear/shaft & dry - teflon coated DU bush bearing requiring no lubrication. These pump in three piece construction are easily cleanable and maintainable. The back cover can simply be removed by four dom nut or the right angle mounting brackets facilitate foot mounting of the pump on base plate with electric motor of appropriate ratings.

## ►► MATERIAL OF CONSTRUCTION

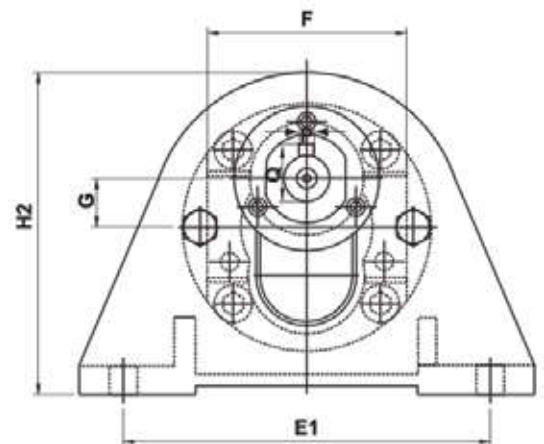
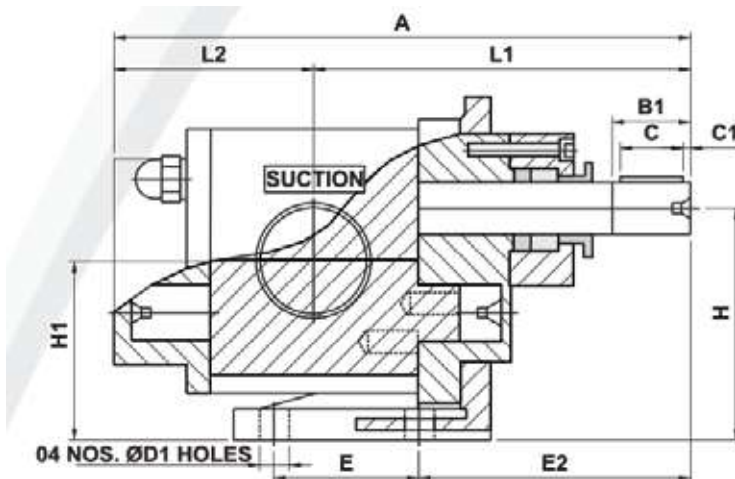
- |                                |  |
|--------------------------------|--|
| • Pump Body : CF8M -S.S.316    | • R.H. & L.H. : ASI - S.S.316            |
| • Front Cover : CF8M - S.S.316 | • Rotor / Stator Shaft : ASI - S.S.316   |
| • Back Cover : CF8M - S.S.316  | • Bush Bearings : Teflon coated 'DU'     |
| • Gland Cover : CF8M - S.S.316 | • Mounting Bracket : C.I.Gr. - 20 IS 210 |

Dom Nut : AISI - S.S.316

Sealing : "Z" Pack teflon

Packing : Teflon Sheet

Key for Coupling : AISI - S.S.316



## ►► MODEL & POWER CHART

PUMP MODEL DRSS	SUCTION & DELIVERY	CAPACITY AT 1440 RPM			POWER REQ.			Unit H.P. Per Kg. press	PUMP DIMENSION														WT. OF PUMP IN KG.
					NO LOAD VISCOUS H.P. at				OVER ALL					MOUNTING & SHAFT									
		LPM	US GPM	M³/hr	200 CST	500 CST	750 CST		A	F G	H2	L1	L2	E	E1	E2	H	H1	D D1	C C1	P Q	B1	
0.25	¼" x ¼"	8.3	2.2	0.5	0.20	0.25	0.35	0.02	129	54 12.5	101	94	35	40	120	82	63	50.5	11.5 8	17 3	4 13	25	2.00
040	¾" x ¾"	16.6	4.4	1.0	0.35	0.40	0.55	0.04	134	61	112	98	36	50	120	88	71	57	11.5	17	4	25	3.00
050	½" x ½"	25	6.6	1.5	0.40	0.50	0.70	0.06	146	14	112	103	41	50	120	88	71	57	8	3	13	25	3.50
075	¾" x ¾"	33.3	8.8	2.0	0.45	0.55	0.90	0.09	160	72.5	128	123	46	55	140	92	90	73	14	25	5	35	4.50
100	1" x 1"	50	13.2	3.0	0.50	0.60	1.0	0.13	177	17	128	115	52	55	140	92	90	73	10.5	3	16	35	5.00
125	1¼" x 1¼"	110	26.4	6.0	0.65	0.85	1.25	0.28	210	90	149	143	66	50	155	111	100	79	18	30	6	38	7.00
150	1½" x 1½"	125	33.0	7.5	0.75	0.95	1.50	0.35	225	21	149	151	73	50	155	111	100	79	12	3	20.5	38	10.50
200	2" x 2"	150	39.6	9.0	0.90	1.15	1.75	0.45	251	103	167	162	85	70	190	131	112	87	24	30	8	40	20.50
200		200	52.8	12.0	1.00	1.25	2.15	0.60	281	25	167	179	97	70	190	131	112	87	14	5	27	40	24.00
250	2½" x 2½"	250	66.0	15.0	1.20	1.40	2.35	0.65	299	122	197	206	93	85	200	161	132	102	28	40	8	50	35.00
250		300	79.25	18.0	1.40	1.65	2.50	0.77	319	30	197	218	101	85	200	161	132	102	16	5	32	50	40.00

## ►► SPECIAL NOTE

For calculating the power requirement at duty point, multiply the duty point pressure with unit horse power & add no load viscous power of appropriate viscosity, provide safety margin before fixing the rating of the prime mover. For higher viscosity further margin may be kept or the manufacturer may be consulted. All sizes of pumps are designed to run at 1440 RPM up to viscosity of 500 CST. For small size pump up to 1" same can be safely run at 1440 RPM even at higher viscosity up to 1000 CST with additional horse power. For sizes above 1" reduce the speed to 960 RPM for viscosity up to 1000 CST. For higher viscous liquids, consult the manufacturer to avoid cavitation & over loading problem.

## ►► APPLICATION

This compact and efficient SS pump can be used for handling viscous food products like Ghee, Butter, Fruit pulp, Vegetable sauce, Starch etc. They are also used in Pharmaceutical industries for handling sugar solution, Glycerine, glycol etc. In chemical industries corrosive viscous chemicals can be easily handled with this pump most effectively. nut or the right angle mounting brackets facilitate foot mounting of the pump on base plate with electric motor of appropriate ratings.

## HPLC Servicing, Validation, Trainings and Preventive Maintenance :

**HPLC Servicing** :HPLC Servicing : We have team of service engineers who can attend to any make of HPLC promptly @the most affordable cost.

**Trainings** :We also take up preventive Maintenance to reduce downtime of HPLC's Trainings.

**AMC's/CMC** :AMC's/CMC :We offer user training both in-House and at customer sites on HPLC principles, operations, trouble-shooting.

**Validations** :Validations :We have protocols for carrying out periodic Validations as per GLP/GMP/USFDA norms.

**Instruments** :Instruments :We offer instruments/Renting Services Modules like pumps,detector etc. on Rent.



## About Analytical Technologies

Analytical Technologies is synonymous for offering technologies for doing analysis and is the Fastest Growing Global Brand having presence in at least 96 countries across the global. Analytical Technologies Limited is an ISO:9001 Certified Company engaged in Designing, Manufacturing, Marketing & providing Services for the Analytical, Chromatography, Spectroscopy, Bio Technology, Bio Medical, Clinical Diagnostics, Material Science & General Laboratory Instrumentation. Analytical Technologies, India has across the Country operations with at least 4 Regional Offices, 6 Branch Offices & Service Centers. Distributors & Channel partners worldwide.

## Our Products & Technologies



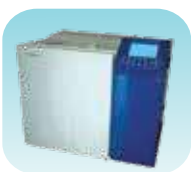
UV/VIS  
Spectro 2080+  
Double Beam



Infra FTIR



Optima Gas  
Chromatograph  
3007



Optima Gas  
Chromatograph  
2979 Plus



Flash  
Chromatograph



Atomic Absorption  
Spectrophotometer



Liquid Particle  
Counter



Optical Emission  
Spectrophotometer



DSC/TGA



Semi Auto Bio  
Chemistry Analyzer



HEMA 2062  
Hematology  
Analyzer



Micro Plate  
Reader/Washer



URINOVA 2800  
Urine Analyzer



Total Organic  
Carbon 3800



Fully Automated  
CLIA



NOVA-2100  
Chemistry Analyzer



PCR/Gradient PCR/  
RTPCR



TOC  
Analyzer



Laser Particle  
Size Analyzer



Ion Chromatograph



Water purification  
system



## Regulatory compliances



## Corporate Social Responsibility

Analytical Foundation is a nonprofit organization (NGO) found for the purpose of:



**Analytical**  
**Foundation**

1. Research & Innovation Scientist's awards/QC Professional Award : Quality life is possible by innovation only and the innovation is possible by research only, hence ANALYTICAL FOUNDATION is committed to identify such personalities for their contributions across various field of Science and Technology and awarding them yearly. To participate for award, send us your details of research / testing / publication at [Info@analyticalfoundation.org](mailto:Info@analyticalfoundation.org)

2. Improving quality of life by offering YOGA Training courses, Work shops/Seminars etc.

3. ANALYTICAL FOUNDATION aims to DETOXYFY human minds,souls and body by means of yoga, Meditation, Ayurveda, Health Care, Awards, Media, Events, Camps etc.



 **Analytical**<sup>®</sup>  
Technologies Limited

**HPLC Solutions   MultipleLabs   Analytical Bio-Med   Analytical Distributors   Analytical Foundation (Trust)**

**Corporate & Regd. Office:**  
Analytical House, # E67 & E68,  
Ravi Park, Vasna Road, Baroda,  
Gujarat 390 015. INDIA

T: +91 265 2253620  
+91 265 2252839  
+91 265 2252370  
F: +91 265 2254395

E: [info@hplctechnologies.com](mailto:info@hplctechnologies.com)  
[info@multiplelabs.com](mailto:info@multiplelabs.com)  
[info@analyticalgroup.net](mailto:info@analyticalgroup.net)

W. [www.analyticalgroup.net](http://www.analyticalgroup.net)  
[www.hplctechnologies.com](http://www.hplctechnologies.com)  
[www.multiplelabs.com](http://www.multiplelabs.com)

Sales & Support Offices:  
across the country :  
Distributors & Channel  
partners World Wide